

# **Installation Note**

---

## **Agilent 89601A Demo Software with PSA**



**Agilent Technologies**

Part Number 89600-90020  
Printed in USA March 2002

**Notice.**

The information contained in this document is subject to change without notice.

Agilent Technologies makes no warranty of any kind with regard to this material, including but not limited to, the implied warranties of merchantability and fitness for a particular purpose. Agilent Technologies shall not be liable for errors contained herein or for incidental or consequential damages in connection with the furnishing, performance, or use of this material.

# Installing Agilent 89601A Demo Software with PSA

This sheet includes instructions for installing 89601A software and configuring a LAN interface to the PSA. The instructions assume that your computer has a LAN card installed and configured for TCP/IP protocol. For information on computer system requirements, refer to the Performance Guide included with this package.

For instructions on configuring a GPIB connection (or LAN/GPIB gateway) rather than LAN, refer to the 89600 Installation and Service Guide (available as install.pdf in the manuals directory on the 89600 installation CD). You have the option of using GPIB or LAN interface; however, the 89600 software will not function properly if both are configured simultaneously.

---

## Install 89600 VSA Software

Insert the Agilent 89600 Vector Signal Analyzers Installation CD-ROM and follow the instructions in the installation wizard.

1. When the Installation Manager window opens, click **Install Agilent 89600 VSA**.
2. In the Installation Options window, select **Full Installation with LAN & GPIB** from the pull-down list.
3. After the software is installed, exit the Installation Manager window.

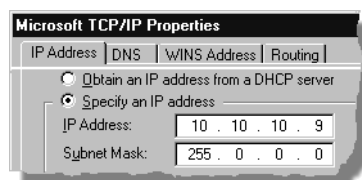
---

## Configure LAN interface

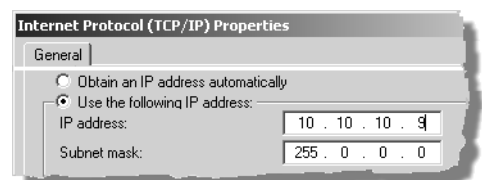
You must ensure that the IP addresses for your computer and PSA are compatible, then configure the LAN interface. The IP address consists of 4 groups of numbers separated by periods (for example 192.192.192.25).

1. If your computer is connected to a Local Area Network, have your network administrator assign a PSA IP address that will work with your computer. Then set the PSA IP address: press **System, Config IO, IP address**, type the new address using the number keypad, and press **Enter**. Continue with step 3.
2. If your computer is not on a Local Area Network and you will be connecting directly to the PSA using a crossover cable, perform these steps:
  - a. Determine the IP address for your computer. Click Start, Run. Type cmd and click **OK**. At the DOS prompt, type ipconfig and press **Enter**. If the IP address is "0.0.0.0", go to step c. If the IP address is anything else, continue with step b.
  - b. Set the IP address on the PSA so that the first 3 sections of the IP address are the same as for the computer, and the last section is 1 greater than that for the computer. (For example, if the computer IP address is 192.192.192.25, set the PSA IP address to 192.192.192.26.) To change the PSA IP address, press **System, Config IO, IP address**, type the new address using the number keypad, and press **Enter**. Continue with step 3.
  - c. Find the IP address for the PSA (press **System, Config IO, IP address**). Set the IP address for the computer so that the first 3 sections are the same as for the PSA, and the last section is 1 lower than for the PSA. (For example, if the PSA IP address is 10.10.10.10, set the computer address to 10.10.10.9.)

For Windows NT, right click **Network Neighborhood**, click **Properties**, **Protocols**, **TCP/IP Protocol**, **Properties**, **Specify an IP address**.



For Windows 2000, right click **My Network Places**, click **Properties**, right click **Local Area Network**, click **Properties**, **Internet Protocol (TCP/IP)**, **Properties**, **Use the following IP address**.

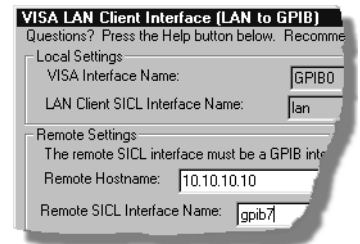


Type the address in the box, using periods (.) to separate the sections.



- d. Click in the Subnet Mask box. Accept the default numbers that appear. Click **OK** and close all dialog boxes.
- e. Reboot your computer.
3. Be sure that both the PSA and your computer are connected to the LAN, or connect a crossover cable between the computer and the PSA.
4. Cycle power on the PSA.
5. Run the Agilent I/O Libraries I/O Configuration tool. Click the **IO** icon in the task bar, then click **Run IO Config**. (Or click **Start, Programs, Agilent IO Libraries, IO Config**.)
6. Remove any previously installed interfaces.
 

SICL name	VISA Name
lan	n/a
n/a	GPIB1
7. Setup the LAN Client.
  - a. Click **LAN Client, Configure**.
  - b. Leave the default selections in the LAN Client dialog box.
  - c. Remember the name in the SICL Interface Name box.
  - d. Click **OK**.
8. Setup the VISA LAN Client.
  - a. Click **VISA LAN Client, Configure**.
  - b. Enter the PSA IP address in the Remote Hostname box. (To find the IP address for the PSA, press **System, Config I/O** on the PSA front panel.)
  - c. Change the Remote SICL Interface Name to **gpib7** (this **must** be gpib7, not hpib7).
  - d. Confirm that the entry in the LAN Client SICL LAN Interface box matches the SICL Interface Name that you noted in step 7.
  - e. Remember the VISA Interface Name.
  - f. Click **OK, OK**.
9. Run VISA Assistant to confirm that the instrument shows up in the list of instruments.
  - a. Click the IO icon, then click **Run VISA Assistant**. (Or **Start, Programs, Agilent IO Libraries, VISA Assistant**.) The instrument should be listed in the left side of the VISA Assistant window as something like <VISA Interface Name>::18::INST. (The VISA Interface Name will be something like GPIB0.) If the instrument is listed, continue with step d. Otherwise, continue with the next step.
  - b. If the instrument does not appear in the list, verify that cables are connected and power is turned on. Run VISA Assistant again. If the instrument appears in the list, continue with step d. Otherwise, continue with the next step.
  - c. If the instrument still does not appear in the list, run IO Config again and remove the interfaces you added. Then repeat step 7 and step 8, and run VISA Assistant again.
  - d. Close VISA Assistant.



## Run the 89600 analyzer

1. Start the analyzer by double-clicking the appropriate icon on your desktop or by clicking **Start, Programs, Agilent 89600 VSA, Vector Signal Analyzer**.
2. When a dialog box asks if you want to obtain authorization, click **Yes**.
3. On the Trial License tab, click **Accept Trial**.
4. Click OK in the message box, then click **Close** in the authorization box. The 89600 VSA software starts. You can use the demo software for 14 days. Note that only one 14-day trial period is available. You cannot request another trial license. If you want to continue using the 89601A software, you must purchase it.
5. Click **Utilities, Hardware**. Verify that the Simulate hardware box is unchecked.
6. Under ADC1 tab select the address that corresponds to the Agilent PSA. Be sure that nothing is selected on the other tabs in the Select Hardware window.